

mobile**cube**

Product Catalogue Services API

Mobile Cube provides an API for third-party applications (especially mobile apps) to connect to an ATG-based commerce application.

For a more detailed overview, see the document Introduction to Mobile Cube.

This document outlines the Product Catalogue functionality supported by the framework.

This document covers Mobile Cube Release 1.0 for ATG 9.4.

Table of Contents

| | | |
|------------|------------------------------------------|-----------|
| 1 | PRODUCT CATALOGUE NAVIGATION | 3 |
| 1.1 | GET TOP-LEVEL CATEGORIES | 3 |
| 1.1.1 | SUCCESSFUL TOP-LEVEL CATEGORY RETRIEVAL | 3 |
| 1.2 | GET CATEGORY DETAILS | 3 |
| 1.2.1 | SUCCESSFUL CATEGORY RETRIEVAL | 4 |
| 1.2.2 | UNKNOWN CATEGORY | 4 |
| 1.3 | GET PRODUCT DETAILS | 4 |
| 1.3.1 | SUCCESSFUL PRODUCT RETRIEVAL | 5 |
| 1.3.2 | UNKNOWN PRODUCT | 5 |
| 1.4 | GET SKU DETAILS | 6 |
| 1.4.1 | SUCCESSFUL SKU RETRIEVAL | 6 |
| 1.4.2 | UNKNOWN SKU | 6 |
| 1.5 | GET PRODUCT IMAGES | 7 |
| 1.5.1 | SUCCESSFUL PRODUCT IMAGE RETRIEVAL | 7 |
| 1.5.2 | UNKNOWN PRODUCT | 8 |
| 1.6 | SEARCH PRODUCT CATALOGUE | 8 |
| 1.6.1 | SUCCESSFUL PRODUCT SEARCH | 9 |
| 1.6.2 | NO MATCHING PRODUCTS | 9 |
| 2 | APPENDIX A: DATA TRANSFER FORMATS | 10 |
| 2.1 | CATEGORY LIST | 10 |
| 2.2 | CATEGORY | 10 |
| 2.3 | PRODUCT LIST | 10 |
| 2.4 | PRODUCT | 10 |
| 2.5 | PRODUCT IMAGES | 11 |
| 2.6 | SKU LIST | 11 |
| 2.7 | SKU | 12 |

Legal

Copyright © 2012, 2013 Delivery Cube Limited. All rights reserved.

Mobile Cube API Copyright © 2012, 2013 Creative Applications. Used under license.

Unlicensed use, copying, reproduction, translation, transmission, and distribution prohibited.

Creative Applications is the trading name of The Creative Applications Programmer's Collective Limited, Registered in England and Wales.

Delivery Cube is the trading name of Delivery Cube Limited, Registered in England and Wales, and Delivery Cube Private Limited, Registered in India.

Oracle and Java are registered trademarks of Oracle and/or its affiliates. Other names may be trademarks of their respective owners.

1 Product Catalogue Navigation

1.1 Get Top-Level Categories

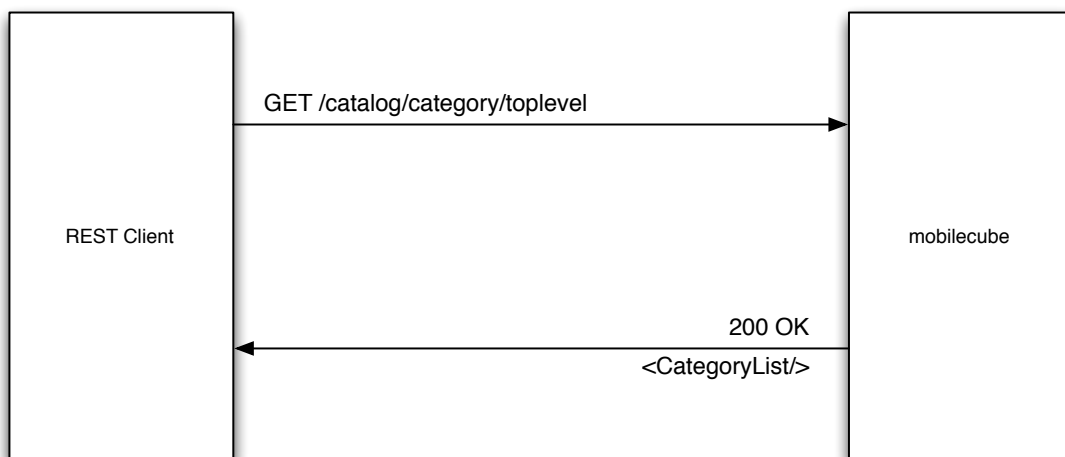
This covers getting the list of the top-level navigable categories from the product catalogue.

The Mobile Cube REST API represents retrieving top-level categories as a request for a Category List¹ resource, by sending a GET request to the `/catalog/category/toplevel` URI, with no request parameters or request body.

1.1.1 Successful Top-Level Category Retrieval

If the request is successful, Mobile Cube will respond with a `200 (OK)` HTTP Response, and the response will include the Category List resource in the response body.

Successful Top-Level Categories



1.2 Get Category Details

This covers the act of retrieving Category details from the system, identified by Category Id, so that they can be displayed to the customer.

The Mobile Cube REST API represents retrieving Category details as a request for a Category² resource identified by its unique ID. This is accomplished by sending a GET request to the `/catalog/category/{categoryId}` URI, with no request parameters or request body.

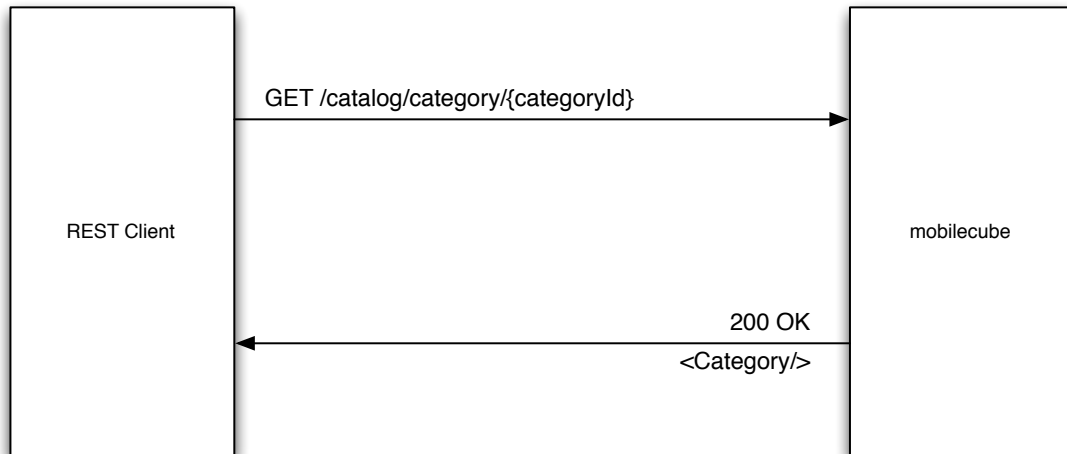
¹ See the Data Transfer Formats Appendix for details on the structure of the Category List resource

² See the Data Transfer Formats Appendix for details on the structure of the Category resource

1.2.1 Successful Category Retrieval

If the request is successful, Mobile Cube will respond with a 200 (OK) HTTP Response, and the response will include the Category resource in the response body.

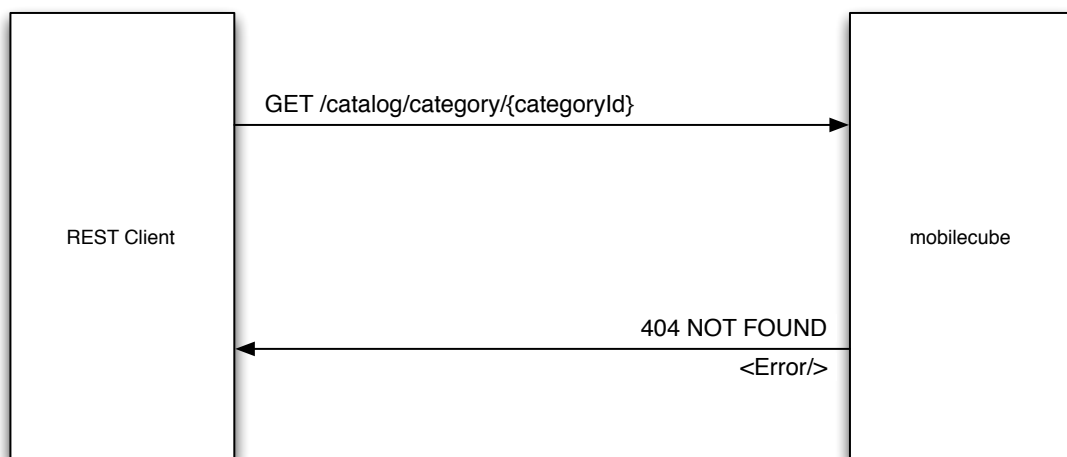
Successful View Category



1.2.2 Unknown Category

If a request is made for a Category with a Category Id that is not valid or does not exist, Mobile Cube will respond with a 404 (Not Found) HTTP response, and will include an Error resource in the body.

Unknown Category Flow



1.3 Get Product Details

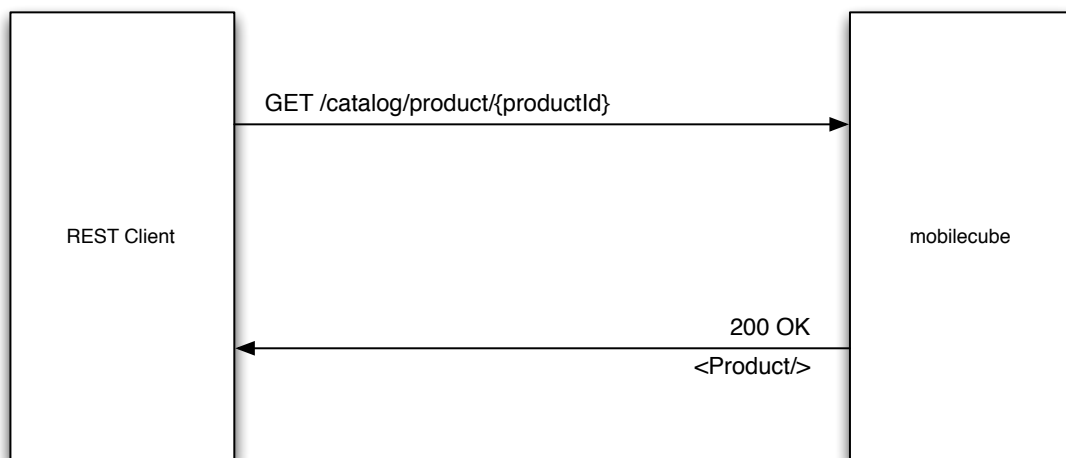
This covers the act of retrieving Product details from the system, identified by Product Id, so that they can be displayed to the customer.

The Mobile Cube REST API represents retrieving Product details as a request for a Product³ resource identified by its unique ID. This is accomplished by sending a GET request to the `/catalog/product/{productId}` URI, with no request parameters or request body.

1.3.1 Successful Product Retrieval

If the request is successful, Mobile Cube will respond with a 200 (OK) HTTP Response, and the response will include the Product resource in the response body.

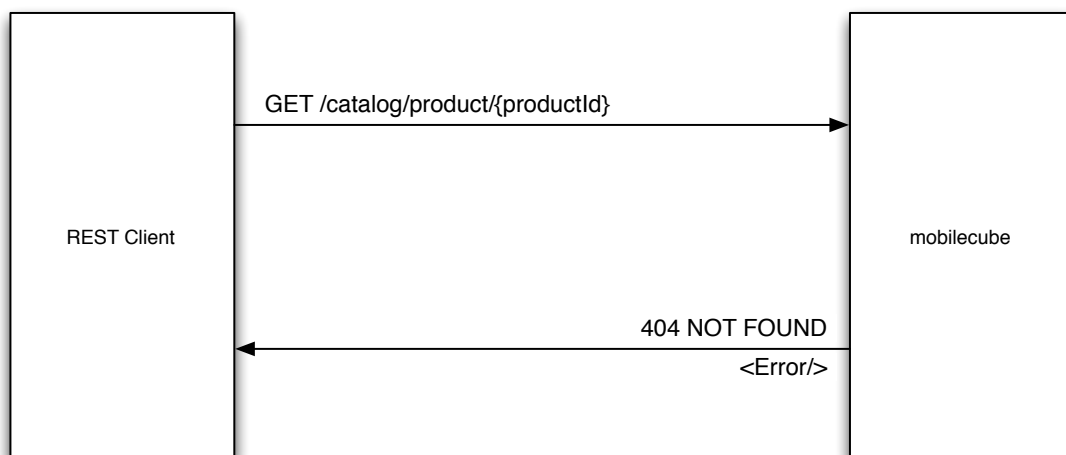
Successful View Product



1.3.2 Unknown Product

If a request is made for a Product with a Product Id that is not valid or does not exist, Mobile Cube will respond with a 404 (Not Found) HTTP response, and will include an Error resource in the body.

Unknown Product Flow



³ See the Data Transfer Formats Appendix for details on the structure of the Product resource

1.4 Get SKU Details

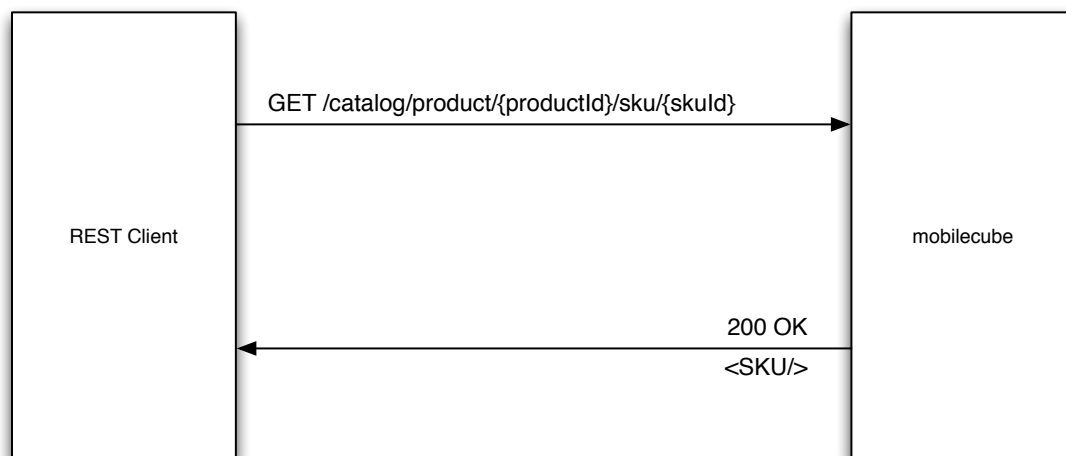
This covers the act of retrieving SKU details from the system, identified by Product Id and SKU Id, so that they can be displayed to the customer.

The Mobile Cube REST API represents retrieving SKU details as a request for a SKU⁴ resource identified by a combination of the SKU's unique ID and its parent product's unique id. This is accomplished by sending a GET request to the `/catalog/product/{productId}/sku/{skuId}` URI, with no request parameters or request body.

1.4.1 Successful SKU Retrieval

If the request is successful, Mobile Cube will respond with a `200 (OK)` HTTP Response, and the response will include the SKU resource in the response body.

Successful View SKU

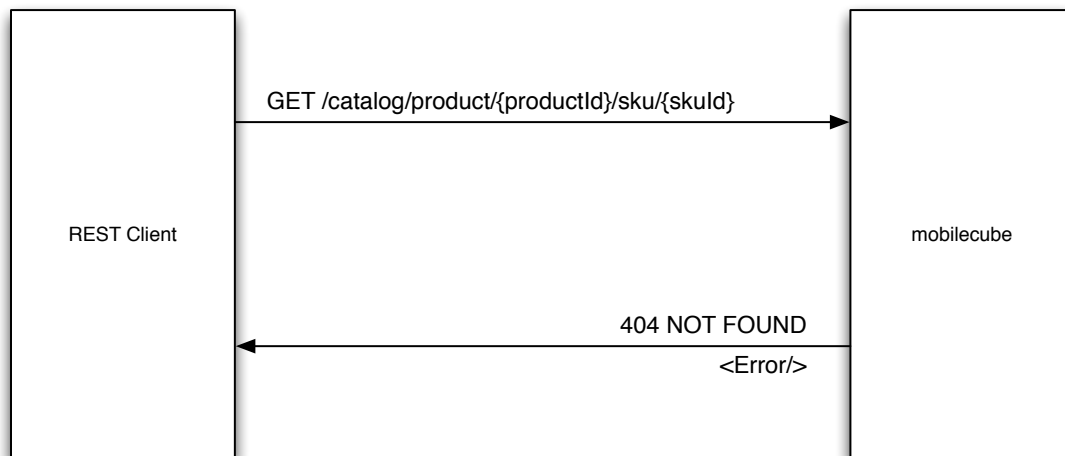


1.4.2 Unknown SKU

If a request is made for a SKU with a SKU Id that is not valid or does not exist, Mobile Cube will respond with a `404 (Not Found)` HTTP response, and will include an Error resource in the body.

⁴ See the Data Transfer Formats Appendix for details on the structure of the SKU resource

Unknown SKU Flow



1.5 Get Product Images

This covers the act of retrieving Product Images from the system, identified by Product Id, so that they can be displayed to the customer.

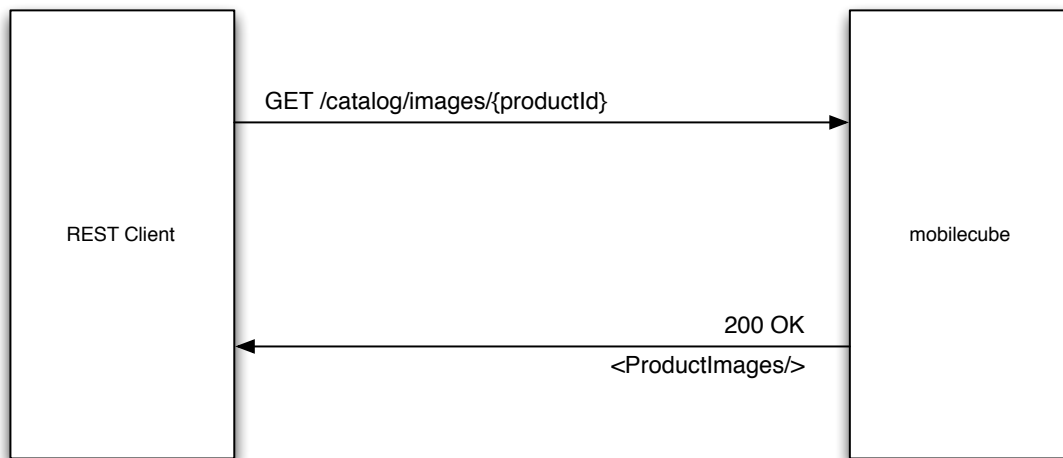
The Mobile Cube REST API represents retrieving Product Image details as a request for a Product Images⁵ resource for the product identified by its unique ID. This is accomplished by sending a GET request to the `/catalog/images/{productId}` URI, with no request parameters or request body.

1.5.1 Successful Product Image Retrieval

If the request is successful, Mobile Cube will respond with a `200 (OK)` HTTP Response, and the response will include the Product Images resource in the response body. This resource will have links to all the available product images for the requested product.

⁵ See the Data Transfer Formats Appendix for details on the structure of the Product resource

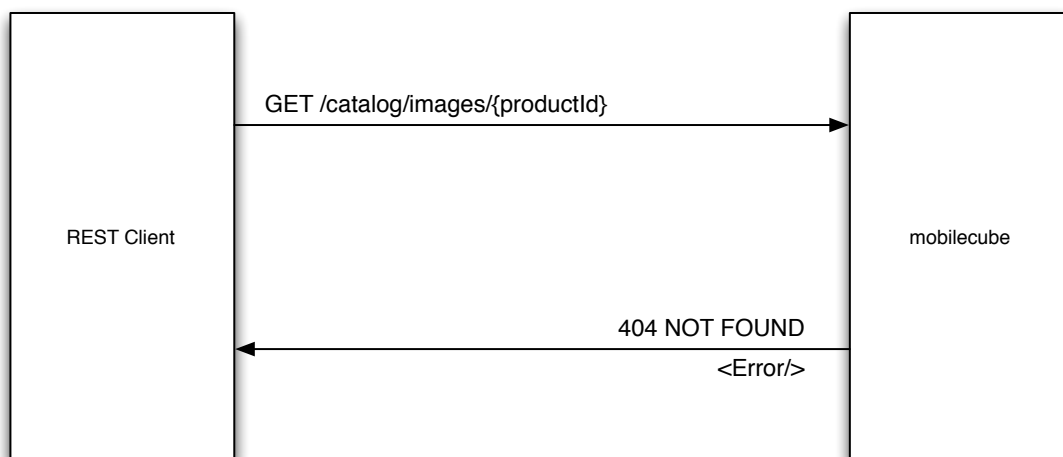
Successful View Product Images



1.5.2 Unknown Product

If a request is made for a Product Images with a Product Id that is not valid or does not exist, Mobile Cube will respond with a `404 (Not Found)` HTTP response, and will include an Error resource in the body.

Unknown Product Flow



1.6 Search Product Catalogue

This covers the act of Searching the Product Catalogue for products matching the specified Search Terms.

The Mobile Cube REST API represents Searching the Product Catalogue as a request for a Product List⁶ resource for all products matching the specified search terms. This is accomplished by sending

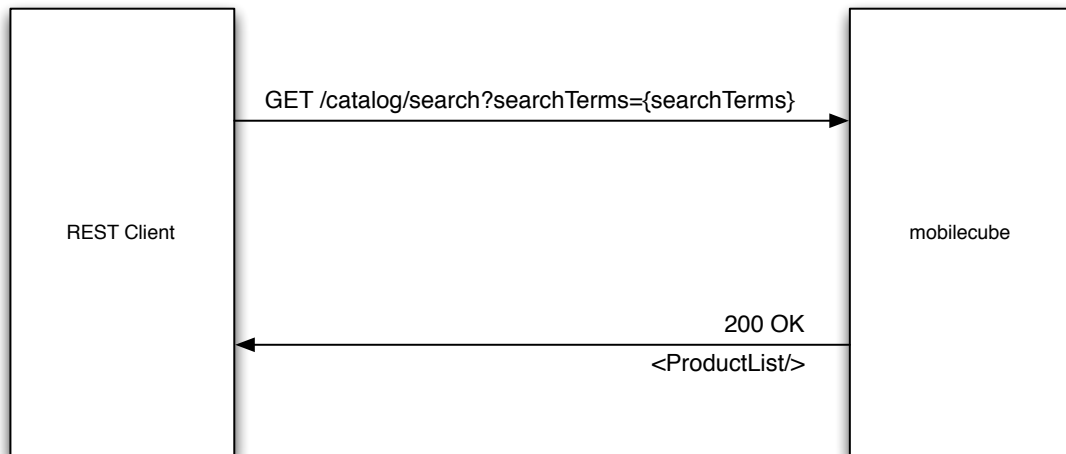
⁶ See the Data Transfer Formats Appendix for details on the structure of the Product resource

a GET request to the `/catalog/search` URI, with a query string parameter containing the search terms.

1.6.1 Successful Product Search

If the request is successful, Mobile Cube will respond with a 200 (OK) HTTP Response, and the response will include the Product List resource in the response body.

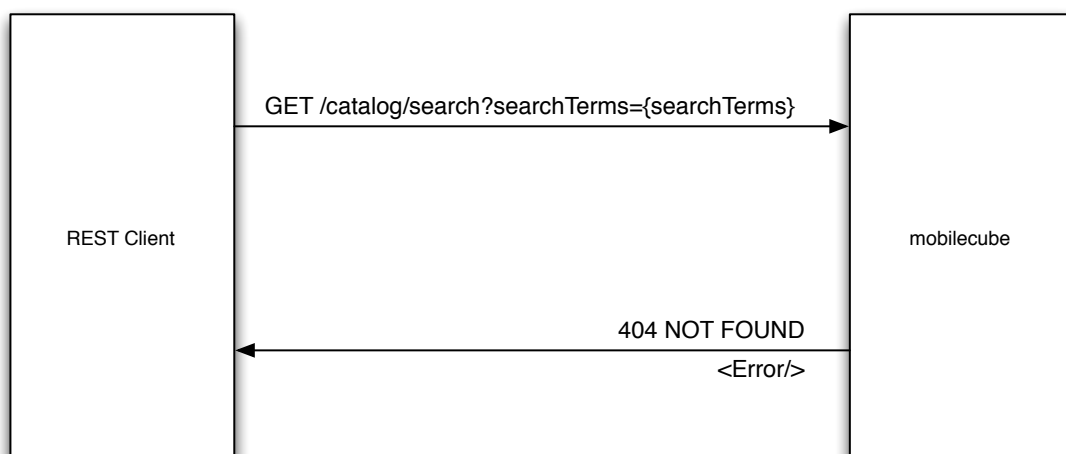
Successful Search Product



1.6.2 No Matching Products

If the request is successful, but no matching products are found, Mobile Cube will respond with a 404 (Not Found) HTTP response, and will include an Error resource in the body.

No Matching Products



2 Appendix A: Data Transfer Formats

2.1 Category List

| Category List | | |
|---------------|--------------------------|-------------------------------------------------------------|
| Property Name | Property Type | Validation |
| Category | List of Category Summary | Mandatory Field, Must Contain At Least One Category Summary |

2.2 Category

| Category Summary | | |
|----------------------|--------------------|-----------------|
| Property Name | Property Type | Validation |
| Catalog Item Summary | CatalogItemSummary | Mandatory Field |

| Category | | |
|---------------------|---------------|------------------------------------------------------------------------------------------|
| Property Name | Property Type | Validation |
| Category Id | String | Mandatory Field |
| Display Name | String | Mandatory Field |
| Description | String | Optional Field. If specified, cannot be null or blank. Long description of this category |
| Creation Date | Date | Optional. The date the category was created |
| Start Date | Date | Optional. The Start Date of the Category |
| End Date | Date | Optional. The End Date of the Category |
| Version | Integer | Optional. The Version Number of the Category |
| Ancestor Categories | Category List | List of references to all Ancestor Categories for this Category. |
| Child Categories | Category List | List of references to Child Categories for this Category |
| Child Products | Product List | List of references to Child Products for this Category |

2.3 Product List

| Product List | | |
|---------------|-------------------------|------------------------------------------------------------|
| Property Name | Property Type | Validation |
| Product | List of Product Summary | Mandatory Field, Must Contain At Least One Product Summary |

2.4 Product

| Product Summary | | |
|-----------------|--|--|
|-----------------|--|--|

| Property Name | Property Type | Validation |
|---------------|---------------|-----------------|
| Id | String | Mandatory Field |
| Display Name | String | Mandatory Field |

| Product | | |
|-------------------------|------------------|-----------------------------------------------------------------------------------------|
| Property Name | Property Type | Validation |
| Product Id | String | Mandatory Field |
| Display Name | String | Mandatory Field |
| Description | String | Optional Field. If specified, cannot be null or blank. Long description of this product |
| Default Parent Category | Category Summary | Optional Field. Reference to the Default Parent Category of this Product |
| Ancestor Categories | Category List | List of references to all Ancestor Categories for this Product. |
| Creation Date | Date | Optional. The date the product was created |
| Start Date | Date | Optional. The Start Date of the Product |
| End Date | Date | Optional. The End Date of the Product |
| Version | Integer | Optional. The Version Number of the Product |
| Child SKUs | SKU List | List of references to Child SKUs for this Product |
| Highest Price | Payment Amount | The Range of Prices of this Product's Child SKUs |
| Lowest Price | Payment Amount | |
| Images | Product Images | Collection of Images for this Product |

2.5 Product Images

| Product Images | | |
|---------------------|---------------|----------------------------------------------------------------|
| Property Name | Property Type | Validation |
| Product Id | String | Mandatory Field. The Product's unique identifier |
| Small Image URL | String | Optional. The URL for a small product image, if one exists |
| Large Image URL | String | Optional. The URL for a large product image, if one exists |
| Thumbnail Image URL | String | Optional. The URL for a thumbnail product image, if one exists |
| Title Image URL | String | Optional. The URL for a title product image, if one exists |
| Detail Image URL | String | Optional. The URL for a detail product image, if one exists |
| Promo Image URL | String | Optional. The URL for a promo product image, if one exists |

2.6 SKU List

| Product List | | |
|---------------|---------------------|----------------------------------|
| Property Name | Property Type | Validation |
| SKU | List of SKU Summary | Mandatory Field, Must Contain At |

| | | |
|--|--|-----------------------|
| | | Least One SKU Summary |
|--|--|-----------------------|

2.7 SKU

| SKU Summary | | |
|---------------|---------------|-----------------|
| Property Name | Property Type | Validation |
| Id | String | Mandatory Field |
| Display Name | String | Mandatory Field |

| SKU | | |
|-----------------|----------------|-------------------------------------------------------------------|
| Property Name | Property Type | Validation |
| SKU Id | String | Mandatory Field |
| Display Name | String | Mandatory Field |
| Creation Date | Date | Optional. The date the SKU was created |
| Start Date | Date | Optional. The Start Date of the Product |
| End Date | Date | Optional. The End Date of the Product |
| Version | Integer | Optional. The Version Number of the Product |
| Parent Products | Product List | Optional. List of references to all Parent Products for this SKU. |
| Price | Payment Amount | The SKU's Price |